

**Description (Sample Specification Language)**

The Modular Deckstub is designed to be mounted to either roof/ceiling decking or 2x rafters. Creates a rigid termination point for Gastite/FlashShield CSST, as well as a mounting position for ball-valves and other components.

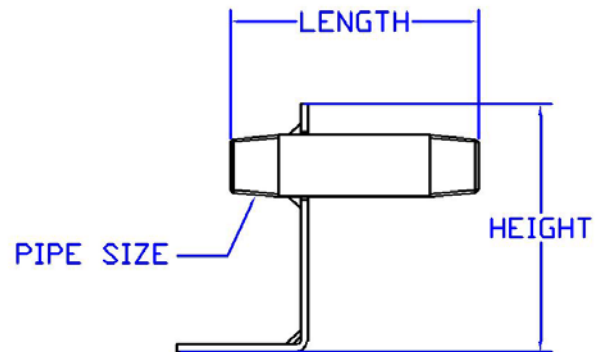
**Features**

- Quick and easy installation
- Reduces the number of joints in the system
- Creates a more polished look to the overall installation
- Mounting holes are supplied on both plate surfaces, allowing for a variety of mounting options.



**Listings:**

- CSA: Certificate No. 2728525
- ICC-ES: Report No. PMG 1019
- IAPMO: File No. C-3250



**Technical Data:**

**General**

Stub-Out Material	Sch 40 Steel Pipe; Black Oxide Coating
-------------------	--

**Dimensional Characteristics**

P/N	Stub-Out Length	Stub-Out Pipe Thread	Stub-Out Extension	Plate Size	Weight (lbs)
DECKSTUB	4"	1/2"	1-1/8"	5"	.87

