

**Description (Sample Specification Language)**

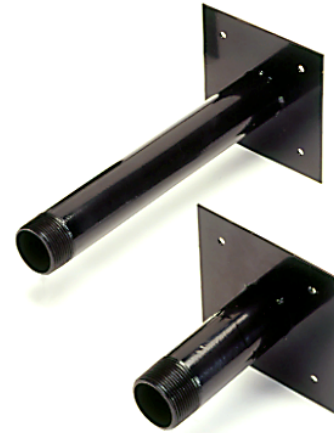
The Straight Stub-Out provides a fixed point for the Gastite/FlashShield mechanical fitting and a stable platform for service meter connections. The Straight Stub-Out may also be used to pass through joist and wall constructions. It is important to follow all requirements for sleeving when passing through masonry construction.

**Features:**

- Fixed Point Termination with NPT

**Listings:**

- CSA: Certificate No. 2728525
- ICC-ES: Report No. PMG 1019
- IAPMO: File No. C-3250



**Technical Data:**

**General**

Stub-Out Material	Sch 40 Steel Pipe; ECOAT
-------------------	--------------------------

**Dimensional Characteristics**

P/N	Stub-Out Length	Stub-Out Pipe Thread	Stub-Out Extension	Plate Size	Weight (lbs)
1/2x6Stub	6"	1/2"	1-1/8"	5"	1.22
1/2x12Stub	12"	1/2"	1-1/8"	5"	1.69
3/4x6Stub	6"	3/4"	1-1/8"	5"	1.45
3/4x12Stub	12"	3/4"	1-1/8"	5"	2.29
1x6Stub	6"	1"	1-1/8"	5"	1.53
1x12Stub	12"	1"	1-1/8"	5"	2.41
1-1/4x6Stub	6"	1-1/4"	1-1/8"	7"	1.80
1-1/4x12Stub	12"	1-1/4"	1-1/8"	7"	2.70
1-1/2x6Stub	6"	1-1/2"	1-1/8"	7"	2.10
1-1/2x12Stub	12"	1-1/2"	1-1/8"	7"	3.20

