

**Description (Sample Specification Language)**

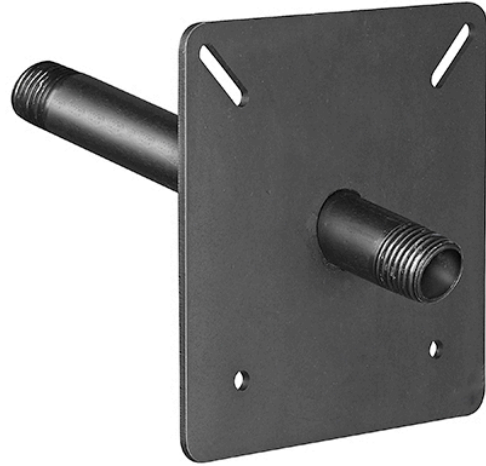
The Angle Stub-Out is designed to create a secure mounting point or stub-out for the transition from Gastite/FlashShield CSST to log lighters, gas logs or firebox insert's controls.

**Features:**

- Fixed Point Termination

**Listings:**

- CSA: Certificate No. 2728525
- ICC-ES: Report No. PMG 1019
- IAPMO: File No. C-3250



**Technical Data:**

**General**

Stub-Out Material	Sch 40 Steel Pipe; ECOAT
-------------------	--------------------------

**Dimensional Characteristics**

P/N	Stub-Out Length	Stub-Out Pipe Thread	Stub-Out Extension	Plate Size	Weight (lbs)
ANGLE -STUB	5-1/2"	1/2"	1-1/8"	5"	1.22